

WATRP Mission to the Czech Republic

International peer review
of the Czech programme of the geological repository development

Background materials

Structure and Organization of RAWRA

CONTENTS

1	<i>Structure and organization of RAWRA</i>	5
1.1	Responsibilities and expert qualifications of departments and experts related to the GR development	5
1.1.1	Department of development of deep geological repository for high level waste and spent nuclear fuel	5
1.1.2	Safety and licensing department	6
1.2	Organisational scheme of RAWRA from 1.1.2004.....	7

1 Structure and organization of RAWRA

Radioactive Waste Repository Authority (RAWRA) was established in 1997 year according to the Atomic Law No. 18/1997. The mission, position and activity of Authority are given by Statute. The main responsibilities and field of activity of RAWRA are set forth under Article 26 Paragraph 3 of the Atomic Act. The main responsibilities and organizational structure of individual departments are given by Organizational Manual of RAWRA.

1.1 Responsibilities and expert qualifications of departments and experts related to the GR development

1.1.1 Department of development of deep geological repository for high level waste and spent nuclear fuel

Department of development of deep geological repository for high level waste and spent nuclear fuel is responsible for conceptual project and realization of GR project and also for coordination of research and development activities related to RW management. Department further secures:

- Management of the project and budget activities being connected with GR site selection process
- Management of the project of geological repository development and incorporation of results of new technologies coming from research and development activities into the project
- Coordination of international cooperation in the given field
- Preparation of materials for plans of activities and financial plans of RAWRA
- Preparation of proposals for research and development of GR concept and connected activities (SNF reprocessing, transmutation technologies)
- Management of financial and expert control of the research and development programs
- Preparation of proposals for planning of the research and development projects – contracting, control, analysis of results, collaboration with subcontractors during project and elaboration of reports
- Preparing of competent controlled documents

The expert structure of the department is as follows:

- Senior manager for project management and technical development
- Siting manager
- Development project manager
- Technical development manager
- Analysis and archiving of records specialist
- GIS and geophysics specialist

1.1.2 Safety and licensing department

Safety and licensing department is responsible for preparation of proposals for administrative procedures, for safety control and internal safety regulations. Department further secures:

- Management of RAWRA activities of documents, discussing of administrative procedure proposals
- Keeping records about licenses of RAWRA activities and controlling of their validity
- Controlling of nuclear safety and radiation protection
- Keeping records about ionising radiation sources in property of RAWRA
- Management of preparing and completing of safety analyses, disposal system behaviour study and environmental impact assessment process for the repositories
- Controlling of technical and fire safety
- Controlling of working safety
- Management of repository environmental impact monitoring and keeping records of the monitoring
- Management of decommissioning cost estimations
- Coordination of international cooperation in the given field
- Ensuring of safety training
- Management of internal control of keeping Atomic Act requirements
- Preparing of competent controlled documents

The expert structure of the department is as follows:

- Senior manager for safety and licensing
- Nuclear safety and radiation protection specialist
- Safety analyses specialist
- Safety officer

1.2 Organisational scheme of RAWRA from 1.1.2004

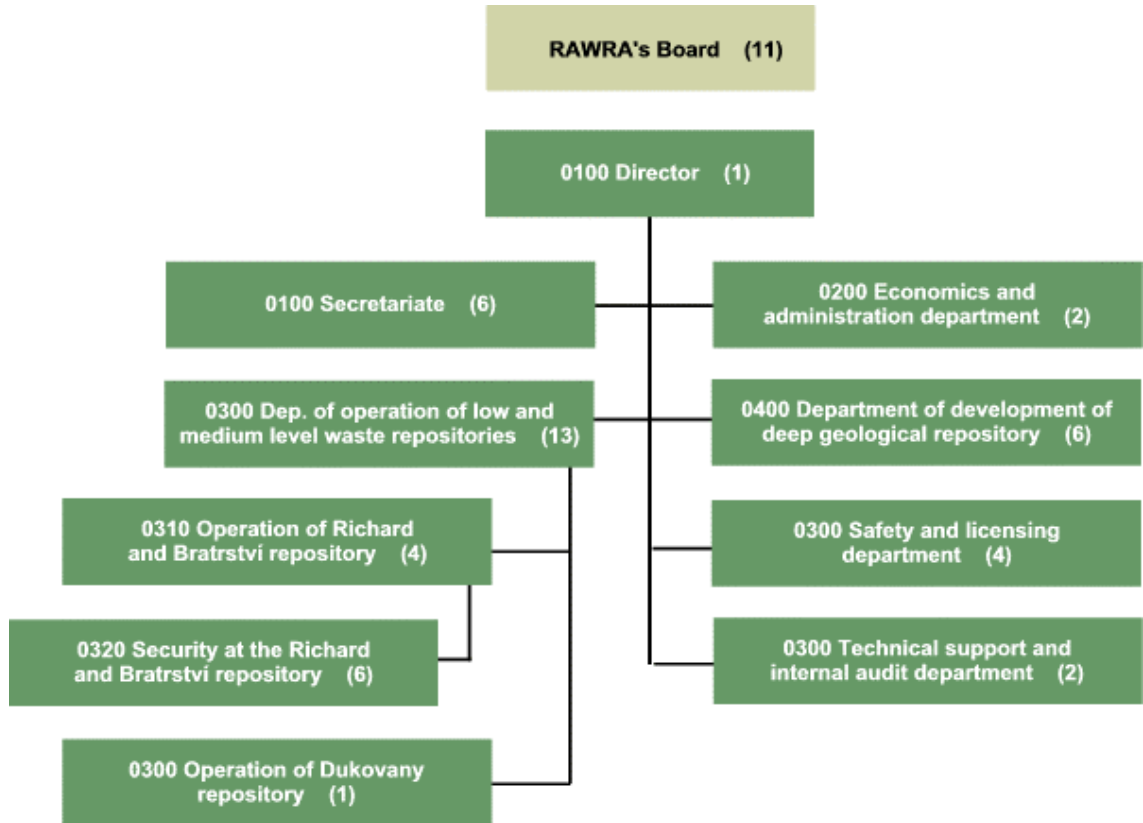


Fig.: Organisational scheme of RAWRA from 1.1.2004